



**Melbourne Office**  
 Niddrie  
 (03) 9938 3830  
[r.barnes@pcte.com.au](mailto:r.barnes@pcte.com.au)

**Perth Office**  
 Nowergup  
 (08) 9407 5363

**Website**  
[www.pcte.com.au](http://www.pcte.com.au)

**Sydney Office**  
 Brookvale  
 (02) 9939 7177

## IntelliRock Wireless and Live

### Introduction

IntelliRock Temperature and Maturity Loggers can measure and document the temperature profiles and calculate maturity concrete. The measurements are important for quality construction and also getting insitu strength readings for the concrete. The system makes use of discrete loggers which act as a sensor and data-logger whilst being protected in the concrete. The system is rugged and easy to use



Figure 1: IntelliRock System in use

IntelliRock Wireless is a recent development from Engius which allows for remote monitoring of IntelliRock Loggers. Working inside familiar software users can start loggers, monitor maturity and temperature on a job site and with IntelliRock LIVE this data can even be accessed from any computer and many smartphones.

### System

The IntelliRock system is made up of three components (see below)

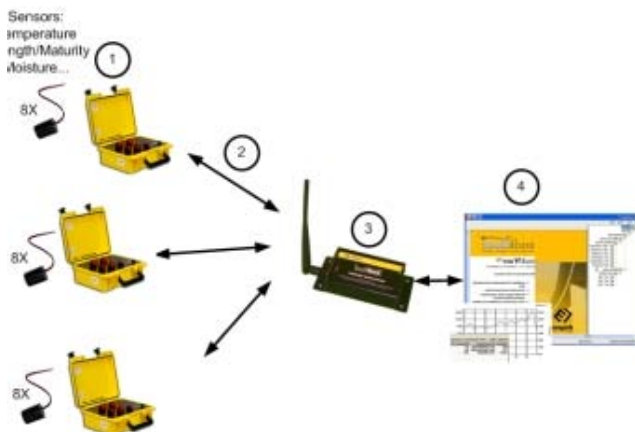


Figure 2: Wireless System Schematic

### Radio Box

The IntelliRock Wireless Remote Radio Box can connect to up to 8 IntelliRock II Logger of any configuration at one time and allows for wireless starting of the connected loggers and automated collection of data from each using a standard PC and the IntelliRock Wireless Base Station. Each box also acts as a radio repeater so with careful placement data collection at large worksites is made simple.

### Wireless Base Station

The Wireless Base Station connects via USB and can connect to any number of Remote Radio Boxes. This means an entire work site can be monitored from a single PC.

The range of this unit can be extended using an external power supply, or where necessary an enhanced directional antenna can communicate with Wireless Remote Radio Boxes up to 20 miles away within direct line of site.

### Software

IntelliRock Wireless equipment uses the same software as is used to download information from the IntelliRock handheld reader providing a familiar operation environment and a consistent data format.

The latest versions of the software have new features added to support IntelliRock Wireless, including the ability to perform periodic automated downloads from loggers, to prepare email reports when strength is sufficient to continue construction or to provide high or low temperature warnings.

### IntelliRock LIVE

Never be left without up to date information from an IntelliRock Wireless monitored worksite, IntelliRock LIVE is a web portal that will synchronise with an IntelliRock Wireless enabled PC and allow remote access to a full record of temperature and maturity for each logger from any internet connected PC.

Synchronisation is a snap with dedicated software sending information to the server periodically or when any change is detected.



**Melbourne Office**  
Niddrie  
(03) 9938 3830  
[r.barnes@pcte.com.au](mailto:r.barnes@pcte.com.au)

**Perth Office**  
Nowergup  
(08) 9407 5363

**Website**  
[www.pcte.com.au](http://www.pcte.com.au)

**Sydney Office**  
Brookvale  
(02) 9939 7177

Trial Log at PCTE NSW  
S/N 8207054  
15/06/2011 4:59 PM to 21/06/2011 3:29 PM  
5.9 Days Elapsed

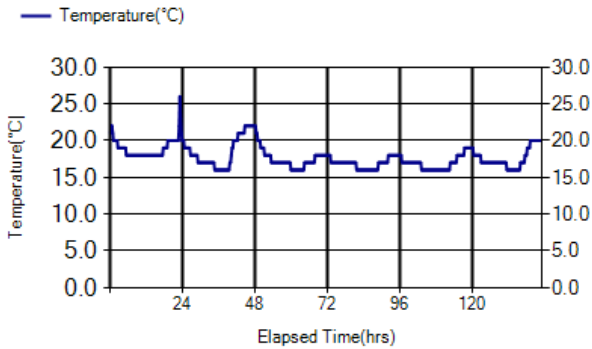


Figure 3: IntelliRock System Auto-reporting

### IntelliRock Wireless Repeaters

Using Wireless Repeaters distant Radio Boxes can be networked with each other and data collected from within range of any box or repeater.

### Starter Kits

We have two configurations for starter kits available. They contain:

#### Basic-

- 8 x Loggers (Standard Mat or Temp config)
- IRWI-R2-500mW (500mW Remote Unit – 2 Channels)
- IRWI-B (Wireless Base Station)
- IRWI-Charger

#### Enhanced-

- 16 x Loggers (Standard Mat or Temp config)
- IRWI-R8-500mW (500mW Remote Unit – 8 Channels)
- IRWI-B (Wireless Base Station)
- IRWI-Charger

**Optional Extra-** 50 Loggers, IntelliRock Reader

### Logger Specs

Logs temperature time only:

- Temperature accuracy +/-1oC
- Nurse Saul or Arrhenius calculation
- Operating temperature –18oC to 85oC
- Battery last for 6-12mnts from turning logger on
- Logs for period specified but data retained while batteries last
- Weight 80gms

### Background

For further background on the need for temperature logging or the maturity method for insitu strength, please see the Intelli-Rock Temperature or Maturity Brochure. These are available from [www.pcte.com.au](http://www.pcte.com.au)

Type	Code	Operation	Re-use
Maturity	MAT-02-15M28D-8FT	Maturity and Temp Logged every 15min for 28 days	No
	MAT-02-30M28D-8FT	Maturity and Temp Logged every 30min for 28 days	No
Temp	TPL-02-1H180D-4FT	Temp logged every hour for 180 days	No
Precast	PCL-02-3H7D-50X	External Logging box for Precast Sensor Logs every 3hrs for 7days	50 times
	PCL-S4	Precast Sensor	No
Humidity	HML-02-1H3D25XS	Logs Humidity every Hour for 3days or until stability	25 times
	HML-02-1H7D15X	Logs Humidity every 3hours for 7days	15 times
Re-usable	TRL-02-1H2D-15X-4FT	Logs temp every hour for 2 days	15 times
	TRL-02-3H3D-15X-4FT	Logs temp every 3hours for 3days	15 times

PCTE, known for their introduction of leading edge concrete technology has been appointed as the exclusive distributor.

### Other Equipment

The full Proceq range of equipment is available for insitu non destructive concrete measurement, including Schmidt Hammers, Covermeters, Half Potentials, Resistivity, Ultrasonics and Permeability. The Olson Instrument range also includes the CTG, Freedom Data PC and DAS as well as the resonance tester. We also supply Intelli-Rock maturity, temp and humidity logging systems, corrosion rate monitoring equipment, GPR.