



New Products for 2021

Ground Penetrating Radar
Concrete Strength and Quality
Foundations, Geotech and Coatings



PAPWORTHS CONSTRUCTION TESTING EQUIPMENT

Ground Penetrating Radar

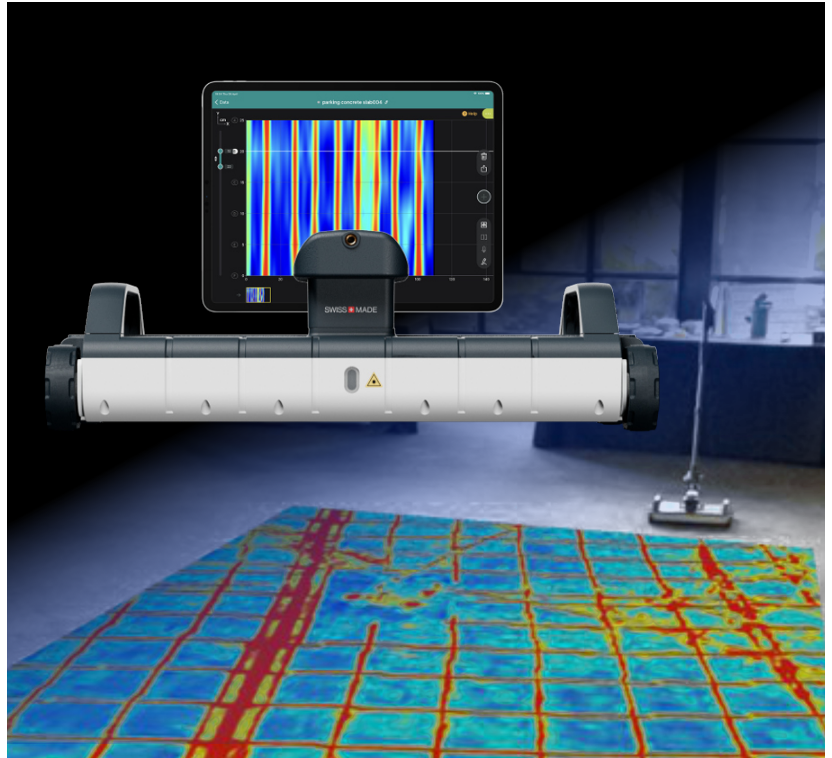
Proceq GP8100

Proceq's GP8100 is a highly productive concrete GPR array of 6 antennas. Built for fast scanning and visualisation of concrete structures over a large area and to quickly locate objects in concrete structures.

Building on the antenna architecture of Proceq's world leading GP8000 radar, the GP8100 can complete 6 parallel scans in one pass, with market leading maximum depth of 800 mm, no other array does so much, so fast, with such depth.

Specifications

Measurement Modes: Superline Scan (1000m)
Area Scan (Grid to 100m²)
Modulated Frequency Range: 400-4000 MHz
Antennas: 6
Penetration depth: 800 mm
Ground Clearance: 8 mm
Distance Antenna ↔ Edge: 83 mm



Proceq GPR App

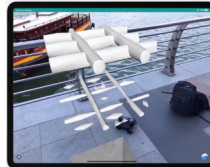
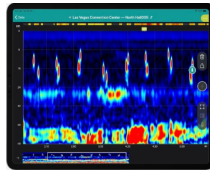
The iPad App has released 5 major updates:

Generation One

Hyperbola and Migrated View, Cloud Storage, SEG-Y Data Export.

Generation Two

Live-wire (EM) Detection, A-Scan Envelope, Hyperbola Fit.



Generation Three

Augmented Reality, 3D File SEG-Y Export, New Tags and Geolocation.

Generation Four

Handwritten Annotation, Button Customisation, Segmented 3D View [True ColourDepth], Flexible GridScan Size.

Generation Five

Integration with WORKSPACE cloud service, superline scan [GP8100], Stop/Resume Area Scan.

Proceq GS8000 Utility GPR

One device. Best-in-class resolution. Shallow and deep targets. Terrain agnostic. High-accuracy GNSS. Comprehensive for Experts. Intuitive for Starters.

The Proceq GS8000 utility scanner offers superior clarity of data and improved depth penetration. It is optimized for closely-spaced and deep targets when locating buried services.

Scan on flat or rough terrains, get real-time accurate 3D position and adjust display settings in real-time.

Specifications

Measurement Modes: Line Scan, Grid Scan
Max Scan Size: 15 km (2D), 80 x 80 m (3D)
On-site Annotations: Tags, marks, photos, notes, voice notes
Modulated Frequency Range: 40-3440 MHz
Radar Technology: Stepped-frequency Continuous-Wave GPR
Effective Bandwidth: 3200 MHz
GNSS Receiver: Multiband GPS + Glonass + Galileo + Beidou
SSR augmentation / RTK-compatible
GNSS Real-time 3D Accuracy: Typ. 1 - 5 cm | 0.5 - 2 in
Ingress Protection (IP) / Sealing: IP65



Silver Schmidt Live

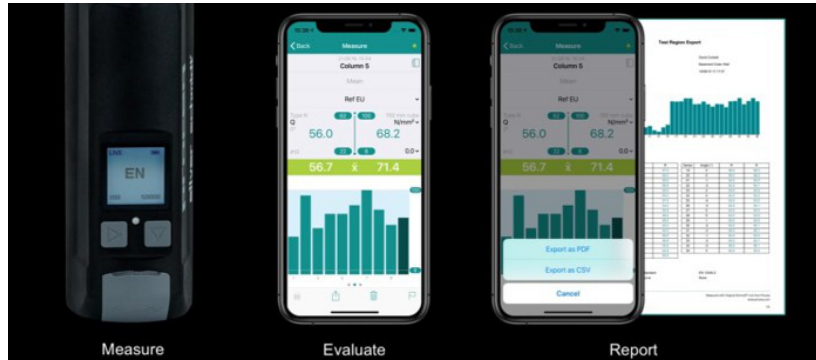
The Silver Schmidt Live is the latest version of Proceq's Q Value Rebound Hammer, used for evaluating the compressive strength and uniformity of concrete.

Part of the Live instrument family from Proceq, the new iOS and Android application records measurements and supports instant reporting and information sharing between users.

Specifications

Strength Range: 10-100 MPa (5-100 MPa w. Type L & Mushroom Head)

Impact Energy: 2.207 Nm (N), 0.735 Nm (L)



Pundit PD8050

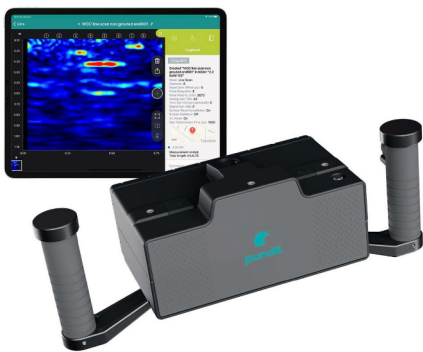
Consolidated power in the worlds lightest ultrasonic pulse echo device for structural imaging or object and defect detection.

The Pundit Array App produces on-site 2D, heatmap and high-resolution 3D imaging fast, with AI Camera assisted positioning.

Specifications

Measuring Range: Up to 2 m depending on concrete quality

Applications: Location of subsurface defects / Measurement of thickness



Temperature and Strength Profiling
INSITE loggers from RPX record concrete temperature differentials and calculate on site concrete strength with cloud uploads.

INSITE strikes a perfect balance between wired and wireless tech, for increased reliability and every-job affordability.

Specifications

Temperature Range: -10°C to 110°C

Temperature Accuracy: ±1°C

Measurement Rate: 1 minute (Max and Min)



Concrete Maturity

The concrete maturity method is a proven early age strength estimation technique defined in ASTM C 1074 that calculates the effects of time and heat for strength gain, used to evaluate strength for scheduling and safety.

Foundations, Geotech and Coatings



Pundit PI8000

Pile Integrity and Impact Echo

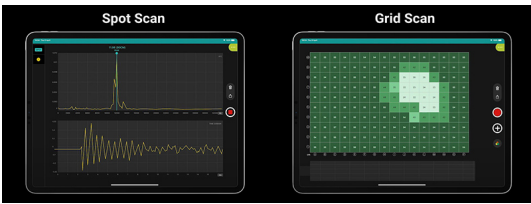
Proceq's Pundit PI8000 is a wireless 2 in 1 system used for pile or column length and quality testing, slab thickness evaluation, and defect location using impact echo and sonic echo test methods.

Specifications

Sampling Rate: 400 kSPS

Range: > 35 kHz, ±50 g

View Modes: Individual Pile, Pile Comparison
IE Spot Scan, IE Grid Scan



PosiTest CMM

Near-instant results and no requirement to drill into the concrete. The PosiTest CMM Concrete Moisture Meter is ideal to quickly evaluate the moisture conditions in concrete.



Specifications

Test Method: Impedance Meter

Scales: 0 to 6% Moisture Content of Concrete
0 to 4% Carbide Method Equivalent



Portable MEMS Inclinometer

The MEMS Portable Vertical Inclinometer system connects to an Android App to enable the tilt data generated by the probe to be managed, stored and transferred directly from site via FTP, API, email or other communication platforms.

Specifications

Probe Length: 680 mm

Probe Diameter: 25 mm

Sensor Type: Biaxial MEMS

Resolution: 0.0005°, 0.0017% FS

Accuracy: ±0.004°, ±0.0125% FS

Repeatability: ±0.002°, ±0.007% FS

DeFelsko PosiTector 200

Ultrasonic Film Thickness Gauge

Upgraded for 2021 with with the New Advanced PosiTector Body; 2.8" touch screen, IP-65, larger memory and help files for all settings.

The PosiTector 200 range of ultrasonic dry film thickness gauges set the standard for paint or waterproofing thickness on concrete or board substrates.

Specifications

Range: 50-7,600 µm

200C Accuracy:
± (2 µm + 3% of reading)

200D Accuracy:
± (20 µm + 3% of reading)



PCTE Contact Information

New Zealand

Jun Han Lee
j.hanlee@pcte.co.nz
+64 274 738 758

QLD

Michael Dubery
m.dubery@pcte.com.au
0419 477 715

VIC

Stuart McCurdy
s.mccurdy@pcte.com.au
0428 315 502

LinkedIn

www.linkedin.com/company/pcte

Webpage

www.pcte.com.au

WA (Head Office)

(08) 9322 4020

Derek Burns

d.burns@pcte.com.au
0498 800 373

Reuben Barnes (MD)

r.barnes@pcte.com.au
0408 034 668

NSW (Warehouse)

(02) 9452 9941

William Ward

w.ward@pcte.com.au
0418 381 709

Jeshwin Mohan

j.mohan@pcte.com.au
0487 043 466